

**DS-KABV6133-G/Surface**  
**Gang box**



- Wall-mounted gang box for KABV6133 series villa door station
- Material: SGCC

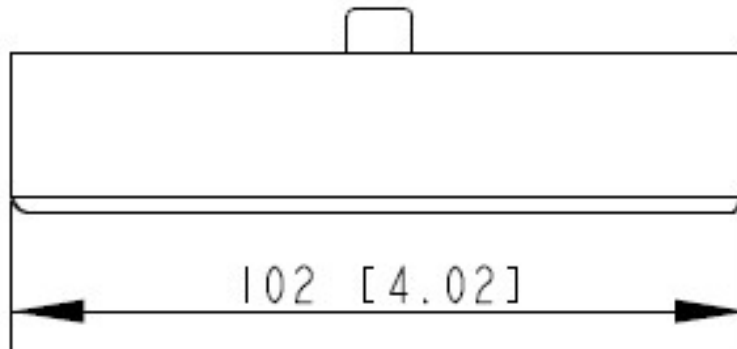
## ▪ Specification

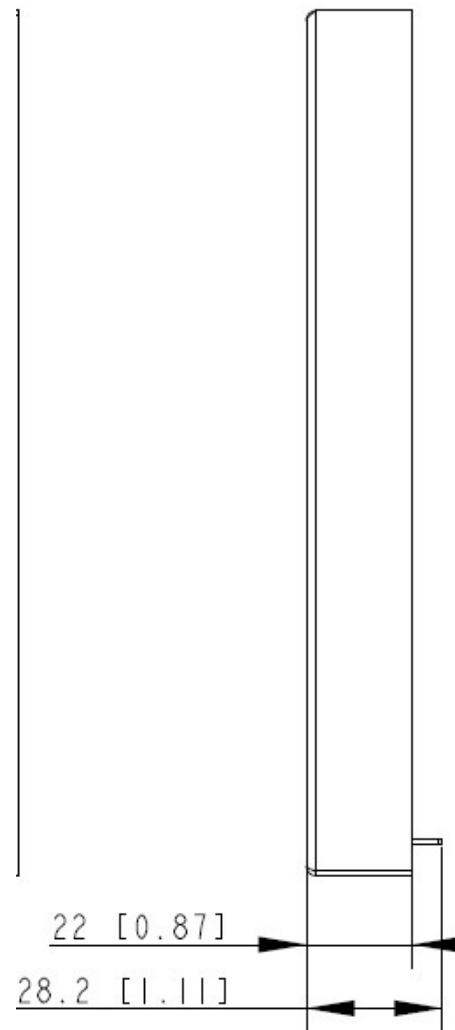
| General               |   |
|-----------------------|---|
| Working temperature   | -40 °C to 60 °C (-40 °F to 140 °F)              |
| Working humidity      | 10% to 95% (no-condensing)                      |
| Dimension (W × H × D) | 180 mm × 102 mm × 22 mm (7.09" × 4.02" × 0.87") |
| Material              | SGCC  |

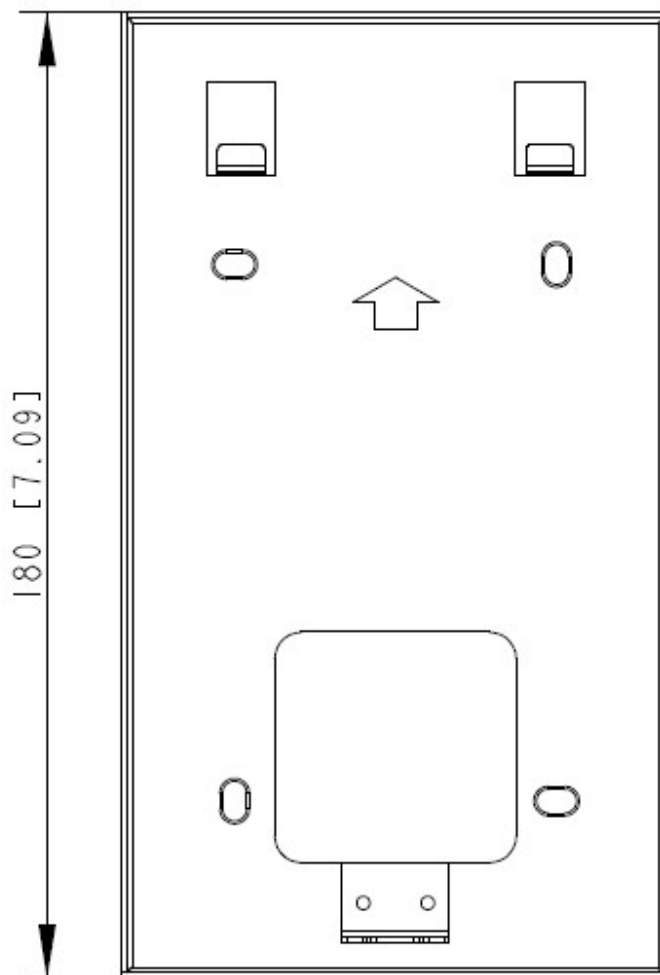
## ▪ Available Model

DS-KABV6133-G/Surface

## ▪ Dimension







▪ **Accessory**



DS-KV6133-WME1



DS-KV6133-WME1/Flush



DS-KV6133-WME1/Surface



# See Far, Go Further



[www.hikvision.com](http://www.hikvision.com)  
[support@hikvision.com](mailto:support@hikvision.com)

